



# Parts Manual

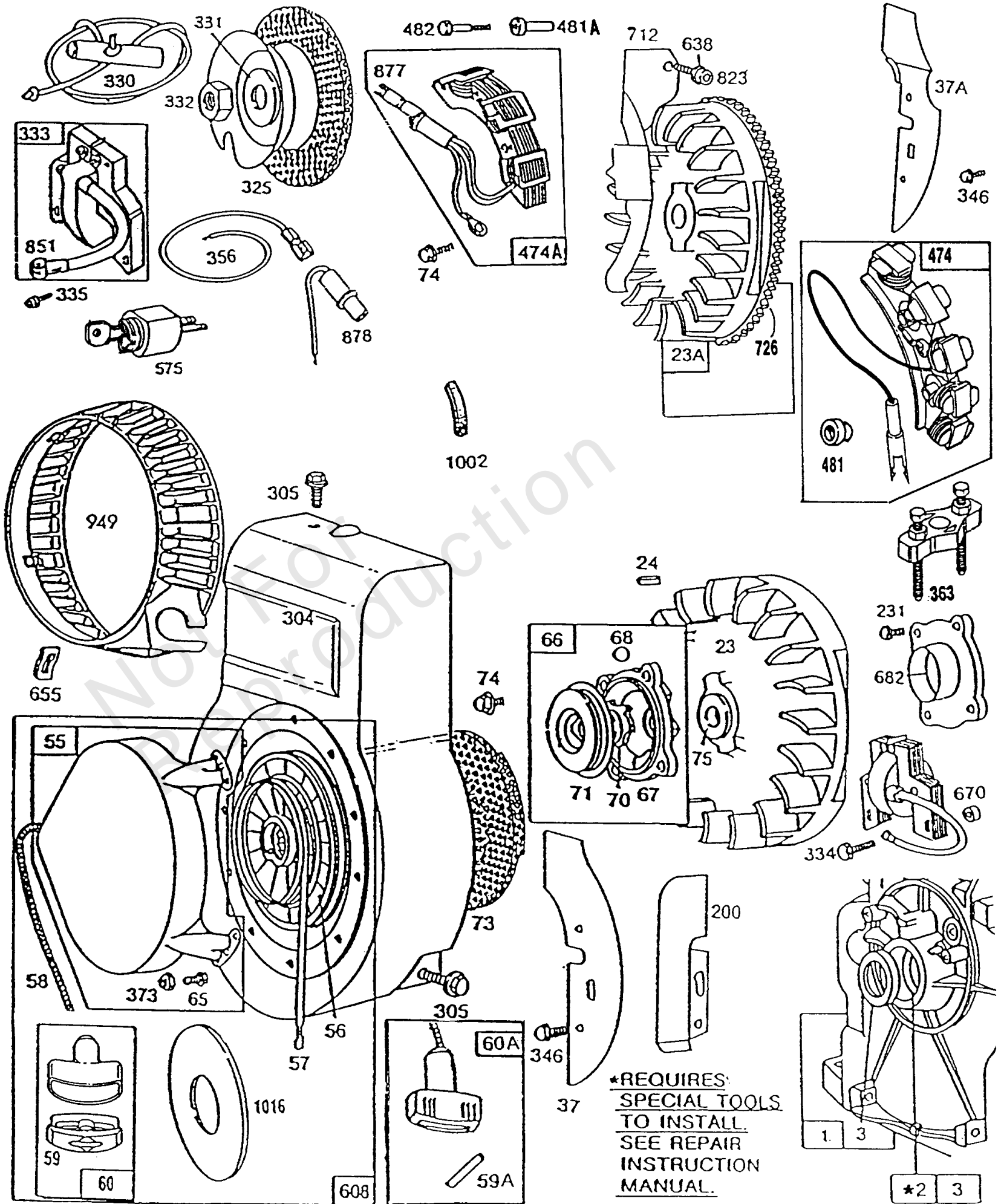
Mfg. No: 130232-3054-01



---

| <b>Model Components</b>                | <b>Page</b> |
|--|-------------|
| Blower Hsg, Flywheel, Rewind. ....     | 4           |
| Carburetor, Controls, Oil Gard. ....   | 8           |
| Cylinder, GearCase, Piston Grp. ....   | 12          |
| Electric Starter. ....                 | 20          |
| Mufflers, Deflectors, Fuel, A/C. ....  | 22          |
| Replacement Engine - US & Canada. .... | 28          |

Not For  
Reproduction

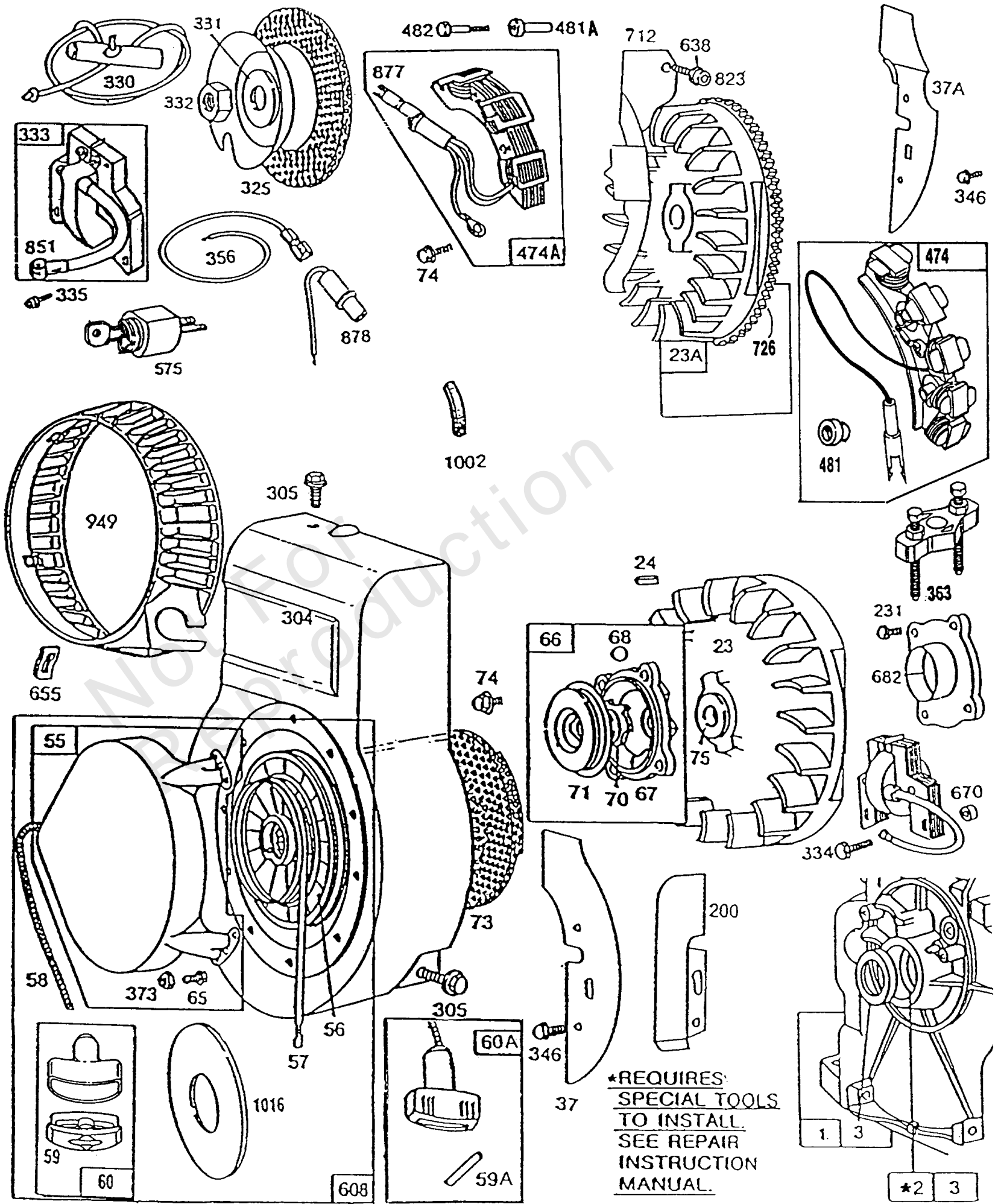


## Blower Hsg, Flywheel, Rewind

| REF NO | PART NO | QTY | DESCRIPTION  |
|--------|---------|-----|--|
| 1      | 395990  |     | CYLINDER ASSEMBLY  |
| 1      | 398765  |     | CYLINDER ASSEMBLY<br>-(Oil Guard)<br>-Used Before Code Date 91070100   |
| 1      | 494955  |     | CYLINDER ASSEMBLY<br>-Used After Code Date 91063000  |
| 2      | 297565  |     | KIT, Bushing/Seal  |
| 3      | 299819  |     | SEAL, Oil<br>-(Plain Bearing) Included in Gasket Set-Part No. 397145   |
| 23A    | 493456  |     | FLYWHEEL<br>-(Inc Steel Ring Gear) Use w/Steel Pinion Starter  |
| 23     | 297229  |     | FLYWHEEL   |
| 24     | 222698  |     | KEY, Flywheel  |
| 37A    | 222578  |     | GUARD, Flywheel<br>-(Electric Starter)   |
| 37     | 222443  |     | GUARD, Flywheel  |
| 55     | 299431  |     | HOUSING, Rewind Starter  |
| 56     | 295871  |     | PULLEY, Starter<br>-(63 Rope) If Longer Rope is Required, Order Rope No. 66894 and Cut to Length.              |
| 57     | 490179  |     | SPRING-REWIND STR  |
| 58     | 66884   |     | ROPE, Starter<br>-(Cut To Required Length) If Longer Rope is Required, Order Rope No. 66894 and Cut to Length. |
| 59A    | 230228  |     | PIN, Starter Grip  |
| 59     | 490653  |     | INSERT, Grip   |
| 60A    | 66728   |     | GRIP, Starter Rope   |
| 60     | 490652  |     | GRIP-STARTER ROPE  |
| 65     | 94128   |     | SCREW  |
| 66     | 399671  |     | CLUTCH-STARTER<br>-(Uses Rubber Coated Retainer Washer-Ref. 71)  |
| 67     | 394897  |     | HOUSING, Clutch  |
| 68     | 63770   |     | BALL, Clutch   |
| 70     | 298799  |     | RATCHET, Clutch<br>-(engine W/Ring Gear on FW equipped for Elec Start)   |
| 71     | 394506  |     | COVER, Ratchet<br>-(Rubber Coated)   |
| 73     | 221923  |     | SCREEN, Rotating   |
| 74     | 93490   |     | SCREW<br>-(Rotating Screen)  |
| 74     | 93808   |     | SCREW  |
| 75     | 224061  |     | WASHER<br>-(5/8 Hole)  |
| 200    | 223886  |     | GUIDE, Air<br>-(Rewind Starter)  |
| 231    | 93064   |     | SCREW  |
| 304    | 490169  |     | HOUSING, Blower  |
| 305    | 93158   |     | SCREW<br>-(1/4-20 X 5/8)   |
| 325    | 299421  |     | PULLEY, Rope Starter<br>-(With Screen)   |
| 330    | 69932   |     | GRIP, Starter Rope   |
| 331    | 224061  |     | WASHER<br>-(5/8 Hole)  |

### Footnotes:

To Replace Crankshaft Gear Pin, Order Part No. 230978



**\*REQUIRES SPECIAL TOOLS TO INSTALL. SEE REPAIR INSTRUCTION MANUAL.**

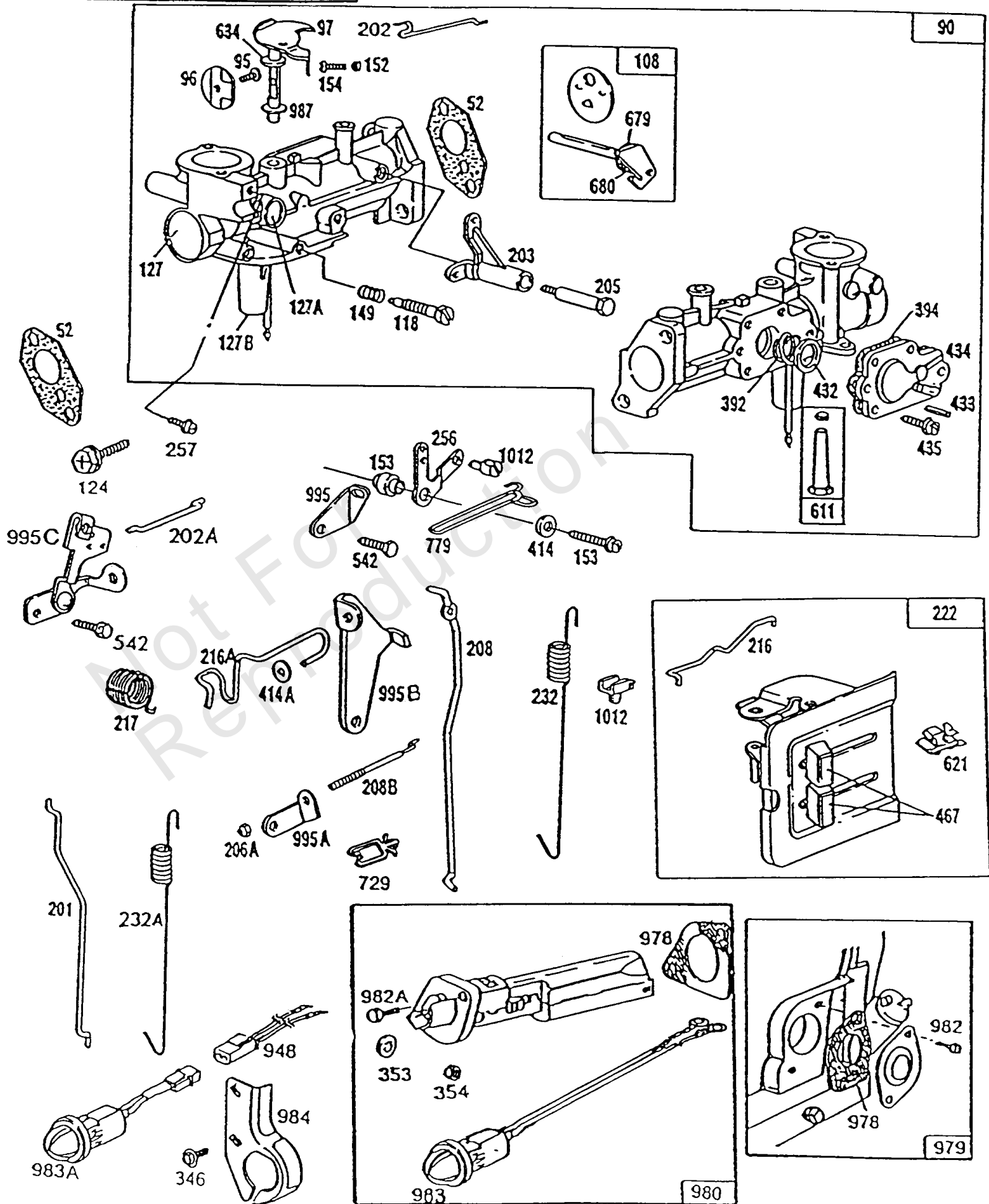
## Blower Hsg, Flywheel, Rewind

| REF NO | PART NO | QTY | DESCRIPTION  |
|--------|---------|-----|--|
| 332    | 92284   |     | NUT<br>-(Flywheel)   |
| 333    | 397358  |     | ARMATURE-MAGNETO   |
| 334    | 93613   |     | SCREW<br>-(Armature)   |
| 335    | 93414   |     | SCREW  |
| 346    | 93705   |     | SCREW<br>-(8-32 X 3/8)   |
| 356    | 398808  |     | WIRE, Stop<br>-(Cut To Required Length)                            |
| 363    | 19069   |     | PULLER, Flywheel   |
| 373    | 92987   |     | STARTER, Rewind  |
| 474A   | 494254  |     | ALTERNATOR<br>-Used Before Code Date 91041500                      |
| 474    | 494254  |     | ALTERNATOR<br>-Used After Code Date 91041400                       |
| 481A   | 230970  |     | BUSHING, Alternator<br>-Used Before Code Date 91041500             |
| 481    | 231767  |     | BUSHING, Alternator<br>-Used After Code Date 91041400              |
| 482    | 93639   |     | SCREW  |
| 575    | 396291  |     | SWITCH, Starting<br>-Uses: 392832 Key Set                          |
| 608    | 390463  |     | STARTER-REWIND   |
| 638    | 93713   |     | WASHER   |
| 655    | 222598  |     | ANCHOR, Rewind Spring<br>-(Stamped Rewind Housing)                 |
| 670    | 261065  |     | SPACER   |
| 682    | 211516  |     | SHIELD, Starter  |
| 712    | 223140  |     | GUARD, Flywheel<br>-(With One Tab for 1-5/8 Cut Out in Blower Hsg) |
| 726    | 494548  |     | GEAR, Ring<br>-(Includes Mounting Hardware)                        |
| 823    | 93712   |     | SCREW  |
| 851    | 221798  |     | TERMINAL, Spark Plug   |
| 877    | 393854  |     | WIRE/CONNECTOR, Alternator   |
| 878    | 393422  |     | WIRE ASSEMBLY<br>-(Dc Only)  |
| 949    | 280680  |     | GUARD, Rewind  |
| 1002   | 280783  |     | TRIM, Blower Housing Cover   |
| 1016   | 490817  |     | SPACER-REWIND<br>-(Rewind)   |

### Footnotes:

To Replace Crankshaft Gear Pin, Order Part No. 230978

121 CARBURETOR OVERHAUL KIT

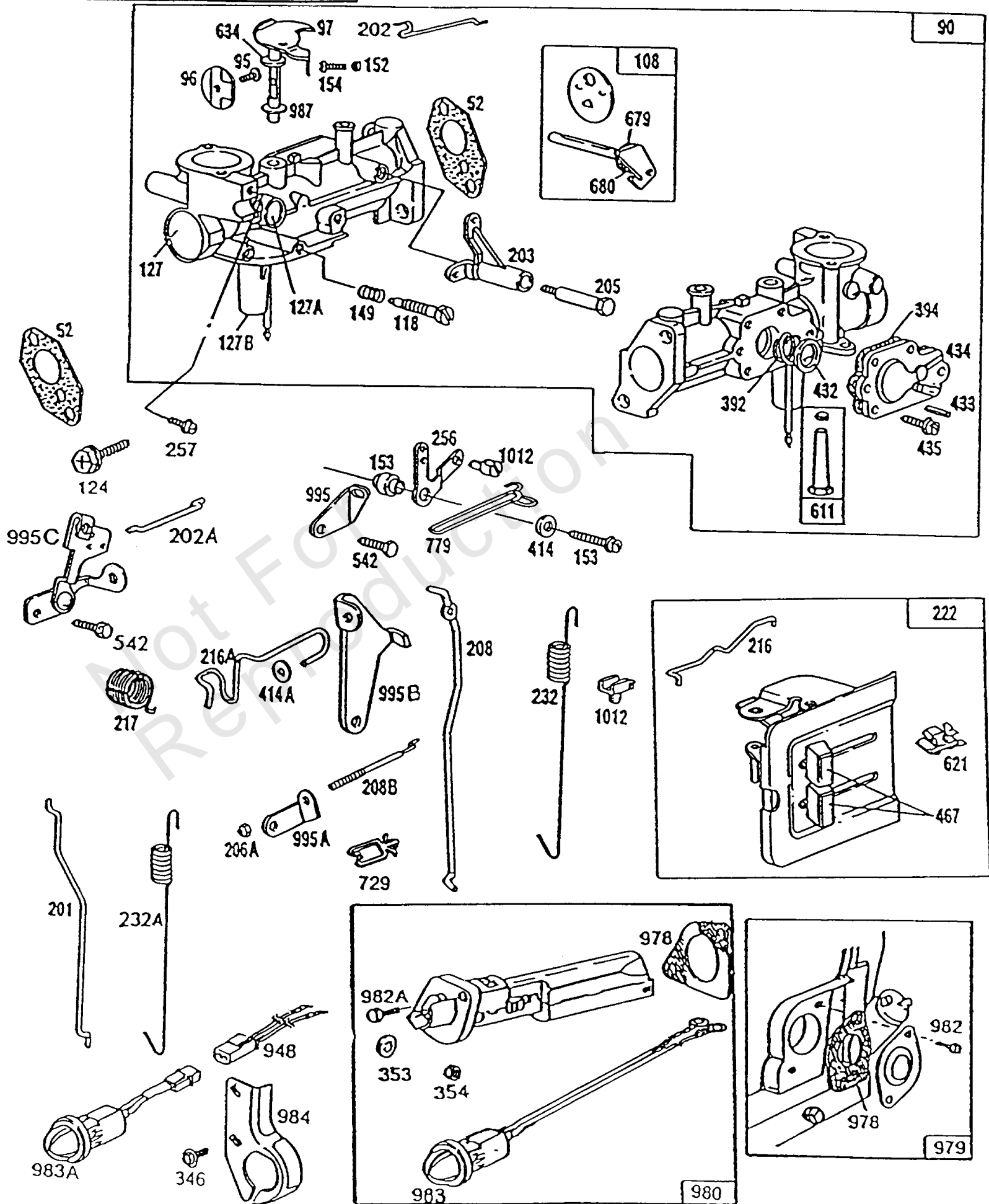




## Carburetor, Controls, Oil Gard

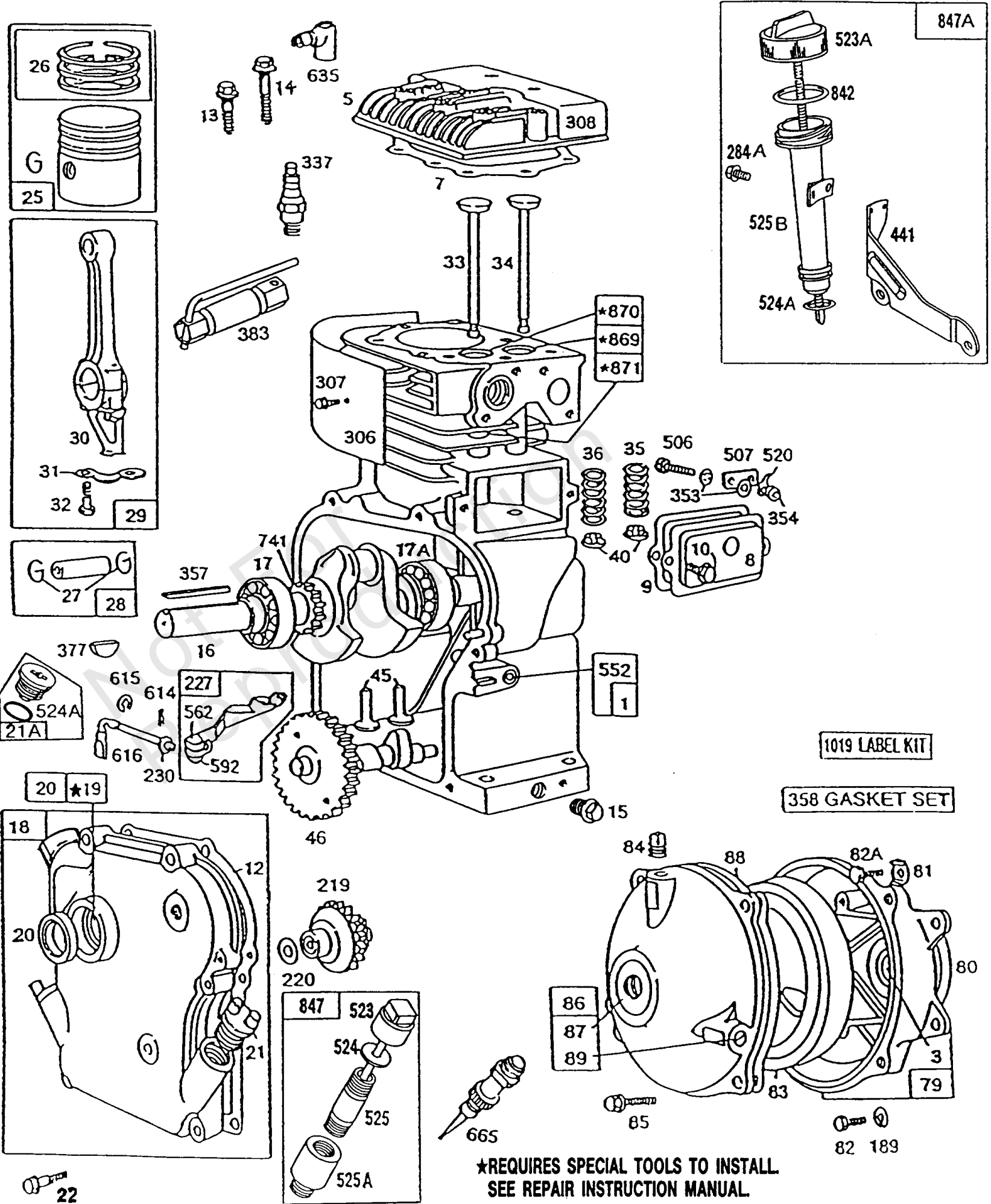
| REF NO | PART NO | QTY | DESCRIPTION  |
|--------|---------|-----|--|
| 52     | 271936  |     | GASKET, Intake<br>-Included in Gasket Set-Part No. 397145. Included in Carburetor Overhaul Kit-<br>Part No. 494624 |
| 90     | 492611  |     | CARBURETOR   |
| 95     | 93499   |     | SCREW<br>-(Throttle Valve)   |
| 96     | 223793  |     | VALVE, Throttle  |
| 97     | 490048  |     | SHAFT, Throttle  |
| 108    | 491177  |     | KIT, Choke Shaft   |
| 118    | 231533  |     | VALVE, Float Needle  |
| 121    | 494624  |     | KIT, Carburetor Overhaul   |
| 124    | 93357   |     | SCREW  |
| 127B   | 223472  |     | PLUG, Welch<br>-Used After Code Date 87011100 and Before Code Date 89022500  |
| 127A   | 223789  |     | PLUG, Welch  |
| 127B   | 223790  |     | PLUG, Welch<br>-Used Before Code Date 87011200   |
| 127    | 220352  |     | PLUG, Welch  |
| 149    | 26336   |     | SPRING, Needle Valve   |
| 152    | 260575  |     | SPRING, Throttle Return  |
| 153    | 490589  |     | SCREW<br>-(Carburetor)   |
| 154    | 93527   |     | SCREW<br>-(5-40 X 5/8)   |
| 201    | 262280  |     | LINK, Mechanical Governor  |
| 202A   | 262470  |     | LINK, Throttle   |
| 202    | 262270  |     | LINK, Throttle<br>-(Mechanical Governor)   |
| 203    | 280720  |     | CRANK, Bell<br>-(Mechanical Governor)  |
| 205    | 231520  |     | SCREW<br>-(8-32)   |
| 206A   | 94081   |     | NUT  |
| 208B   | 262321  |     | ROD, Governor Control  |
| 208    | 262279  |     | ROD, Governor Control  |
| 216A   | 262275  |     | LINK, Choke  |
| 216    | 262274  |     | LINK, Choke<br>-Used Before Code Date 87030200   |
| 216    | 262359  |     | LINK, Choke<br>-Used After Code Date 87030100  |
| 217    | 262281  |     | SPRING/LINK, Mechanical Governor   |
| 222    | 490649  |     | BRACKET, Control   |
| 232A   | 262310  |     | SPRING, Governor<br>-(Return)  |
| 232    | 262288  |     | SPRING, Governor<br>-(Return)  |
| 256    | 223813  |     | CRANK, Bell  |
| 257    | 93543   |     | SCREW<br>-(10-32 X 3/8)  |
| 346    | 93705   |     | SCREW<br>-(8-32 X 3/8)   |
| 353    | 92791   |     | WASHER   |
| 354    | 90576   |     | NUT<br>-(Ground Terminal)  |
| 392    | 262328  |     | SPRING, Pump Diaphragm   |
| 394    | 270026  |     | DIAPHRAGM, Carburetor<br>-Included in Carburetor Overhaul Kit-Part No. 494624                                      |

121 CARBURETOR OVERHAUL KIT



## Carburetor, Controls, Oil Gard

| REF NO | PART NO | QTY | DESCRIPTION   |
|--------|---------|-----|---|
| 414A   | 221198  |     | WASHER  |
| 414    | 220982  |     | WASHER  |
| 432    | 221377  |     | CAP, Spring   |
| 433    | 93265   |     | PIN, Locating   |
| 434    | 210959  |     | COVER, Diaphragm                                      |
| 435    | 93141   |     | SCREW<br>-(Diaphragm Cover)                           |
| 467    | 280715  |     | KNOB, Control   |
| 542    | 93572   |     | SCREW<br>-(10-32 X 3/8)                               |
| 611    | 391813  |     | TUBE-PICK UP<br>-(2 And 3 Quart Tanks)                |
| 621    | 396847  |     | SWITCH, Stop  |
| 634    | 271853  |     | WASHER<br>-(Foam)                                     |
| 679    | 270382  |     | WASHER<br>-(Foam)                                     |
| 680    | 221839  |     | WASHER  |
| 729    | 280590  |     | CLIP, Wire  |
| 779    | 262276  |     | LINK, Control   |
| 948    | 398661  |     | HARNESS, Wiring                                       |
| 978    | 271736  |     | GASKET, Oil Guard<br>-(Oil Guard)                     |
| 979    | 494807  |     | COVER, Oil Guard                                      |
| 980    | 398182  |     | KIT, Oil Gard   |
| 982A   | 94657   |     | SCREW   |
| 982    | 94658   |     | SCREW   |
| 983A   | 398660  |     | LIGHT, Indicator<br>-(Mounting With Light Bracket)    |
| 983    | 490489  |     | LIGHT, Indicator<br>-Uses: 280275 Tie-Cable           |
| 984    | 223773  |     | BRACKET, Oil Guard Light                              |
| 987    | 398970  |     | SEAL, Throttle Shaft<br>-(Lmt 46, 49, 50, 51, 53, 86) |
| 995C   | 491577  |     | BRACKET, Link   |
| 995B   | 223814  |     | BRACKET, Link   |
| 995A   | 491577  |     | BRACKET, Link   |
| 995    | 223887  |     | BRACKET, Link   |
| 1012   | 490507  |     | RETAINER, Link  |

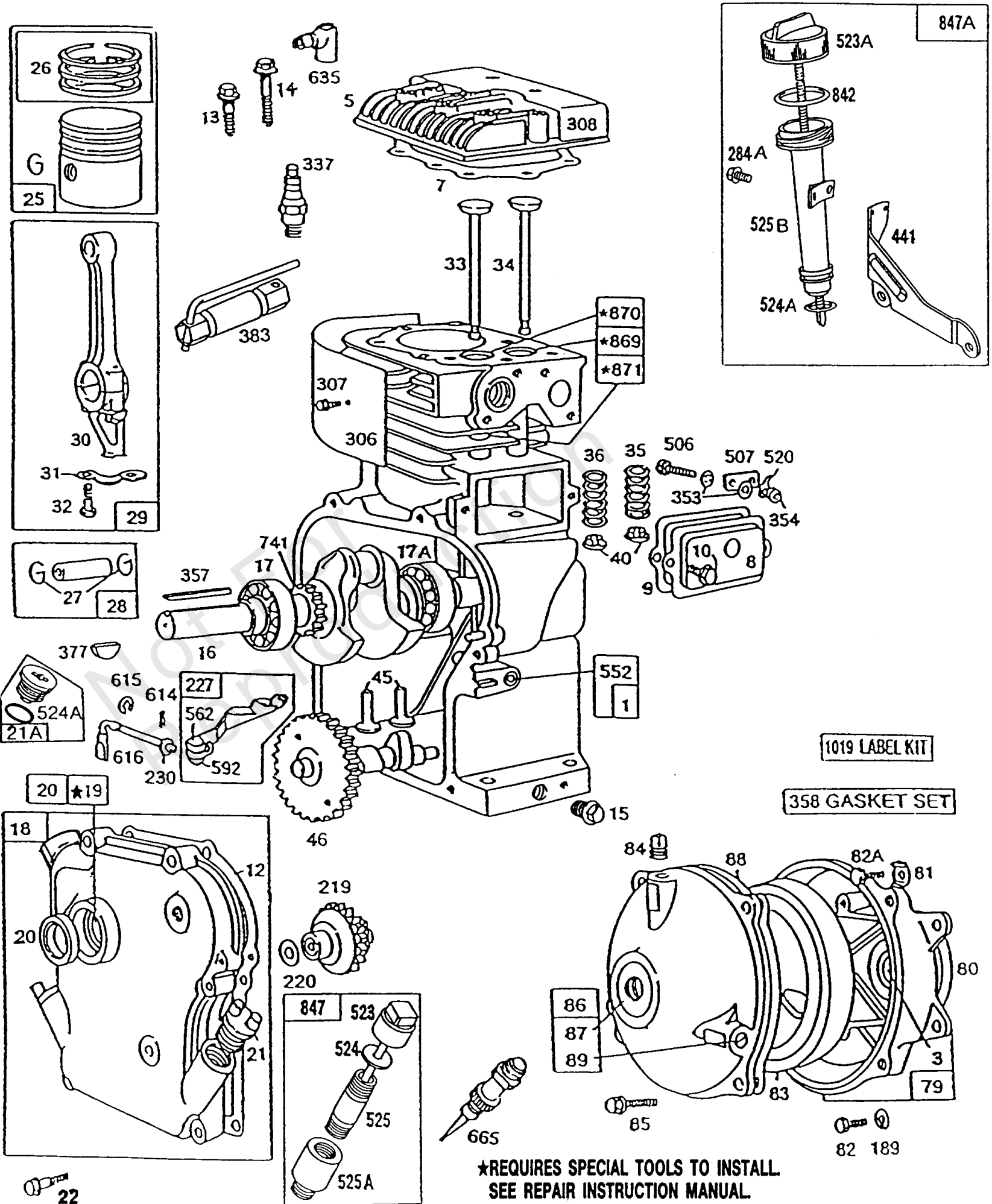


## Cylinder, Gear Case, Piston Grp

| REF NO | PART NO | QTY | DESCRIPTION  |
|--------|---------|-----|--|
| 1      | 395990  |     | CYLINDER ASSEMBLY  |
| 1      | 398765  |     | CYLINDER ASSEMBLY<br>-(Oil Guard)<br>-Used Before Code Date 91070100 |
| 1      | 494955  |     | CYLINDER ASSEMBLY<br>-Used After Code Date 91063000                  |
| 3      | 299819  |     | SEAL, Oil<br>-(Plain Bearing) Included in Gasket Set-Part No. 397145 |
| 5      | 211542  |     | HEAD, Cylinder   |
| 7      | 272157  |     | GASKET, Cylinder Head<br>-Included in Gasket Set-Part No. 397145     |
| 8      | 294178  |     | COVER, Breather Passage  |
| 9      | 27549   |     | GASKET, Rocker Cover<br>-Included in Gasket Set-Part No. 397145      |
| 10     | 94621   |     | SCREW<br>-(Breather Assembly)  |
| 12     | 270080  |     | GASKET, Crankcase<br>-(.015) Included in Gasket Set-Part No. 397145  |
| 12     | 270125  |     | GASKET, CRANKCASE<br>-(.005) Included in Gasket Set-Part No. 397145  |
| 12     | 270126  |     | GASKET-CRKCSE/009<br>-(.009) Included in Gasket Set-Part No. 397145  |
| 13     | 93368   |     | SCREW<br>-(2 3/32)   |
| 13     | 93583   |     | STUD<br>-(Cylinder Head)   |
| 14     | 93369   |     | SCREW<br>-(2-15/32)(Cylinder Head)                                   |
| 14     | 93583   |     | STUD<br>-(Cylinder Head)   |
| 15     | 91249   |     | PLUG, Oil Drain<br>-(1/4 Square)                                     |
| 15     | 93448   |     | PLUG, Oil Drain<br>-(Flush) (1/4-18 NPTF) (Flush) (1/4 18 NPTF)      |
| 15     | 94174   |     | PLUG, Oil Drain  |
| 16     | 493290  |     | CRANKSHAFT<br>-To Replace Crankshaft Gear Pin, Order Part No. 230978 |
| 17     | 99158   |     | BEARING-BALL   |
| 18     | 298204  |     | COVER, Crankcase<br>-(Ball Bearing)                                  |
| 19     | 297603  |     | KIT, Bushing/Seal  |
| 20     | 393812  |     | SEAL-OIL   |
| 21A    | 399195  |     | PLUG, Oil<br>-(High Oil Fill)  |
| 21     | 66768   |     | PLUG, Oil  |
| 22     | 93032   |     | SCREW<br>-(Fuel Tank) (Tank)   |
| 22     | 93656   |     | STUD   |
| 22     | 94067   |     | STUD   |
| 25     | 298904  |     | PISTON ASSEMBLY<br>-(Standard)                                       |
| 25     | 298905  |     | PISTON ASSEMBLY<br>-(.010 Oversize)                                  |
| 25     | 298906  |     | PISTON ASSEMBLY<br>-(.020 Oversize)                                  |

### Footnotes:

To Replace Crankshaft Gear Pin, Order Part No. 230978



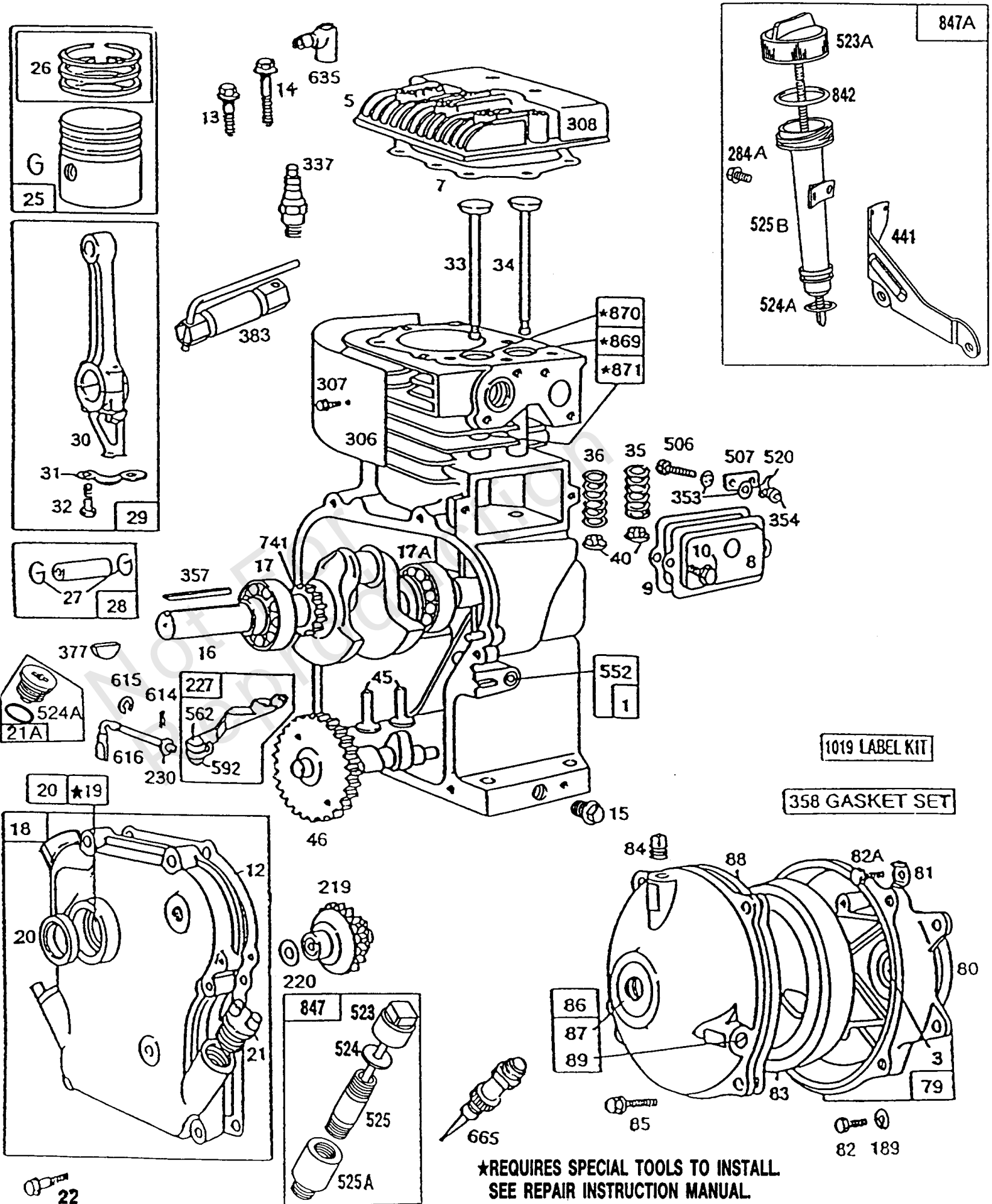
★REQUIRES SPECIAL TOOLS TO INSTALL.  
SEE REPAIR INSTRUCTION MANUAL.

## Cylinder, Gear Case, Piston Grp

| REF NO | PART NO | QTY | DESCRIPTION   |
|--------|---------|-----|---|
| 25     | 298907  |     | PISTON ASSEMBLY<br>-(.030 Oversize)   |
| 26     | 298982  |     | RING SET-STD<br>-(Standard)   |
| 26     | 298983  |     | SET, Ring<br>-(.010 Oversize)   |
| 26     | 298984  |     | RING SET-020<br>-(.020 Oversize)  |
| 26     | 298985  |     | SET, Ring<br>-(.030 Oversize)   |
| 26     | 299742  |     | SET, Ring<br>-(Standard)  |
| 27     | 26026   |     | LOCK, Piston Pin  |
| 28     | 298908  |     | PIN, Piston<br>-(.005 Oversize)   |
| 28     | 298909  |     | PIN, Piston   |
| 29     | 299430  |     | ROD, Connecting<br>-For Connecting Rod With .020 Undersize Crankpin Bore-Order No. 390459 |
| 30     | 221890  |     | DIPPER, Connecting Rod  |
| 31     | 221876  |     | LOCK, Screw Head  |
| 32     | 92296   |     | SCREW<br>-(Connecting Rod)  |
| 33     | 211119  |     | VALVE, Exhaust  |
| 33     | 262464  |     | VALVE, Exhaust<br>-Used After Code Date 90051400  |
| 34     | 261044  |     | VALVE, Intake   |
| 35     | 260552  |     | SPRING, Valve<br>-(Exhaust)   |
| 36     | 262750  |     | SPRING, Valve<br>-(Exhaust)<br>-Used After Code Date 90051400                             |
| 36     | 26478   |     | SPRING, Valve<br>-(Exhaust)   |
| 40     | 230126  |     | PIN, Retainer   |
| 40     | 292259  |     | RETAINER, Valve<br>-(Exhaust)   |
| 40     | 491442  |     | RETAINER, Valve<br>-(Exhaust)<br>-Used After Code Date 90051400                           |
| 40     | 93312   |     | RETAINER, Valve<br>-(Valves With Groove In Stem)  |
| 45     | 260642  |     | TAPPET, Valve   |
| 46     | 212733  |     | CAMSHAFT  |
| 79     | 290779  |     | CASE, Gear Reduction  |
| 80     | 27667   |     | GASKET, Gear Case   |
| 81     | 220234  |     | LOCK, Muffler Screw   |
| 82A    | 92279   |     | SCREW<br>-(5/16-24 X 1/2)   |
| 82     | 91541   |     | SCREW<br>-(5/16-24 X 7/8)   |
| 83     | 211293  |     | SHAFT, Auxiliary Drive  |
| 84     | 92617   |     | SCREW<br>-(Gear Case)   |
| 85     | 92747   |     | SCREW<br>-(Used on Two Top Holes to Mount Cover)  |

### Footnotes:

To Replace Crankshaft Gear Pin, Order Part No. 230978



★REQUIRES SPECIAL TOOLS TO INSTALL.  
SEE REPAIR INSTRUCTION MANUAL.

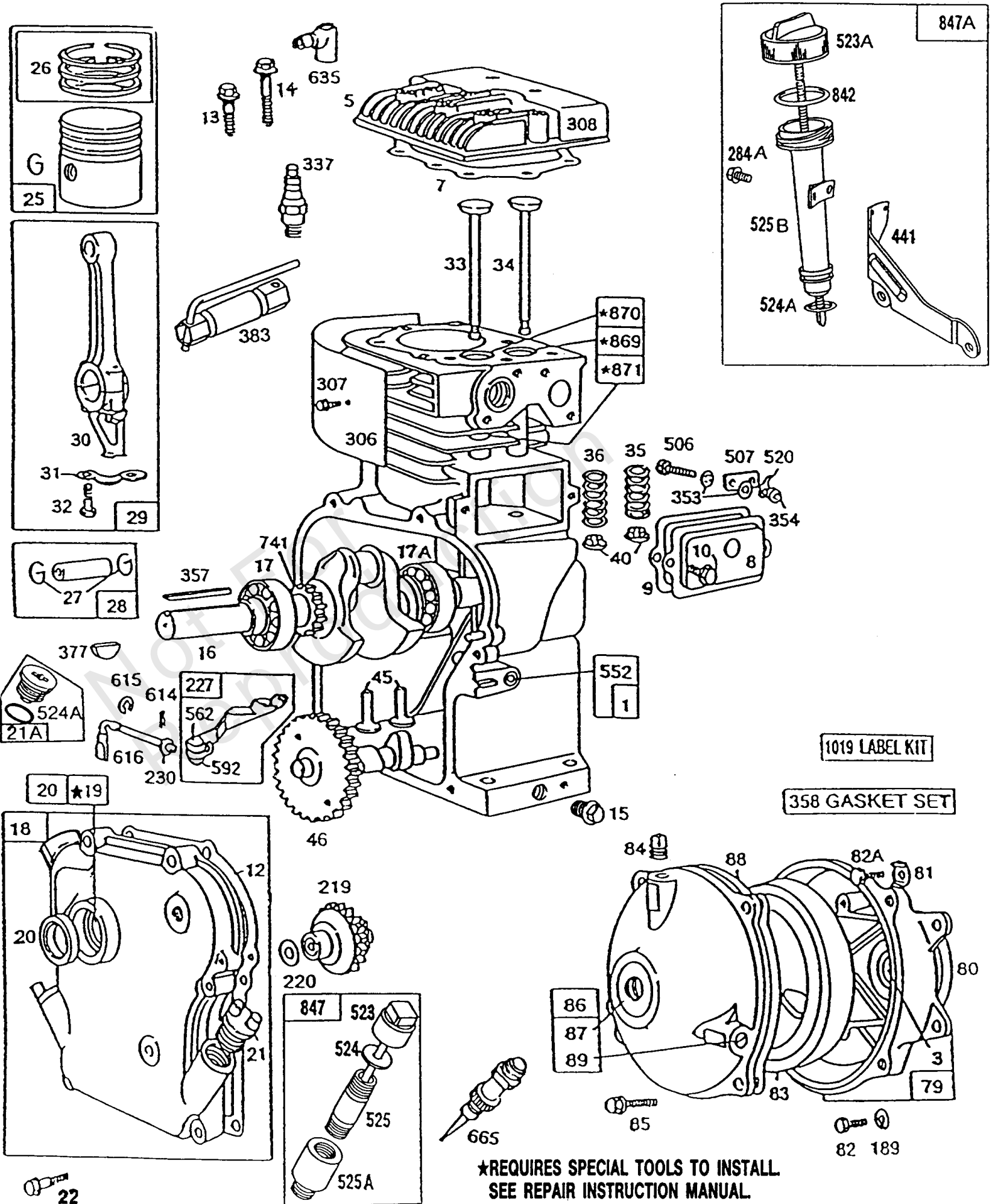


## Cylinder, Gear Case, Piston Grp

| REF NO | PART NO | QTY | DESCRIPTION  |
|--------|---------|-----|--|
| 86     | 291730  |     | COVER, Gear  |
| 87     | 19011   |     | SEAL, Oil  |
| 88     | 27313   |     | GASKET, Gear Cover/Housing   |
| 89     | 93448   |     | PLUG, Oil Drain<br>-(Flush) (1/4-18 NPTF) (Flush) (1/4 18 NPTF)                            |
| 189    | 90366   |     | WASHER   |
| 219    | 391737  |     | GEAR, Governor<br>-Used Before Code Date 91061000  |
| 219    | 494845  |     | GEAR, Governor<br>-Used After Code Date 91060900   |
| 220    | 221551  |     | WASHER<br>-(Governor Lever)  |
| 227    | 490374  |     | LEVER, Governor Control  |
| 230    | 222450  |     | WASHER   |
| 284A   | 94620   |     | SCREW<br>-(Control Panel)  |
| 306    | 221511  |     | SHIELD, Cylinder   |
| 307    | 93042   |     | SCREW<br>-Used Before Code Date 87020900   |
| 307    | 93490   |     | SCREW<br>-Used After Code Date 87020800  |
| 308    | 221512  |     | COVER, Cylinder Head   |
| 337    | 293918  |     | PLUG, Spark  |
| 337    | 298809  |     | PLUG, Spark  |
| 337    | 492167  |     | PLUG, Spark  |
| 337    | 802592  |     | PLUG, Spark<br>-(Resistor)   |
| 353    | 92791   |     | WASHER   |
| 354    | 90576   |     | NUT<br>-(Ground Terminal)  |
| 357    | 91539   |     | KEY, Drive Pulley<br>-(3/16 Square)  |
| 358    | 397145  |     | GASKET SET, Engine   |
| 377    | 93065   |     | KEY, Woodruff<br>-(#6)   |
| 383    | 89838   |     | WRENCH, Spark Plug   |
| 441    | 224240  |     | BRACKET, Oil Fill  |
| 506    | 90200   |     | SCREW<br>-(8-32 X 1/2)   |
| 507    | 66895   |     | INSULATOR  |
| 520    | 93722   |     | TERMINAL, Ground   |
| 523A   | 494416  |     | DIPSTICK/CAP ASSEMBLY<br>-Used After Code Date 90102800                                    |
| 523A   | 492249  |     | DIPSTICK/CAP ASSEMBLY<br>-Used Before Code Date 90102900                                   |
| 523    | 297357  |     | DIPSTICK/CAP ASSEMBLY  |
| 524A   | 271485  |     | SEAL, O-Ring<br>-(Dipstick Tube) (Oil Fill)  |
| 524    | 65304   |     | SEAL, O-Ring<br>-(Dipstick Cap)  |
| 525B   | 280508  |     | TUBE, Dipstick<br>-(Electric And Vertical Pull Starter)<br>-Used Before Code Date 90102900 |
| 525A   | 394884  |     | TUBE, Dipstick   |

### Footnotes:

To Replace Crankshaft Gear Pin, Order Part No. 230978



1019 LABEL KIT

358 GASKET SET

**\*REQUIRES SPECIAL TOOLS TO INSTALL.  
SEE REPAIR INSTRUCTION MANUAL.**

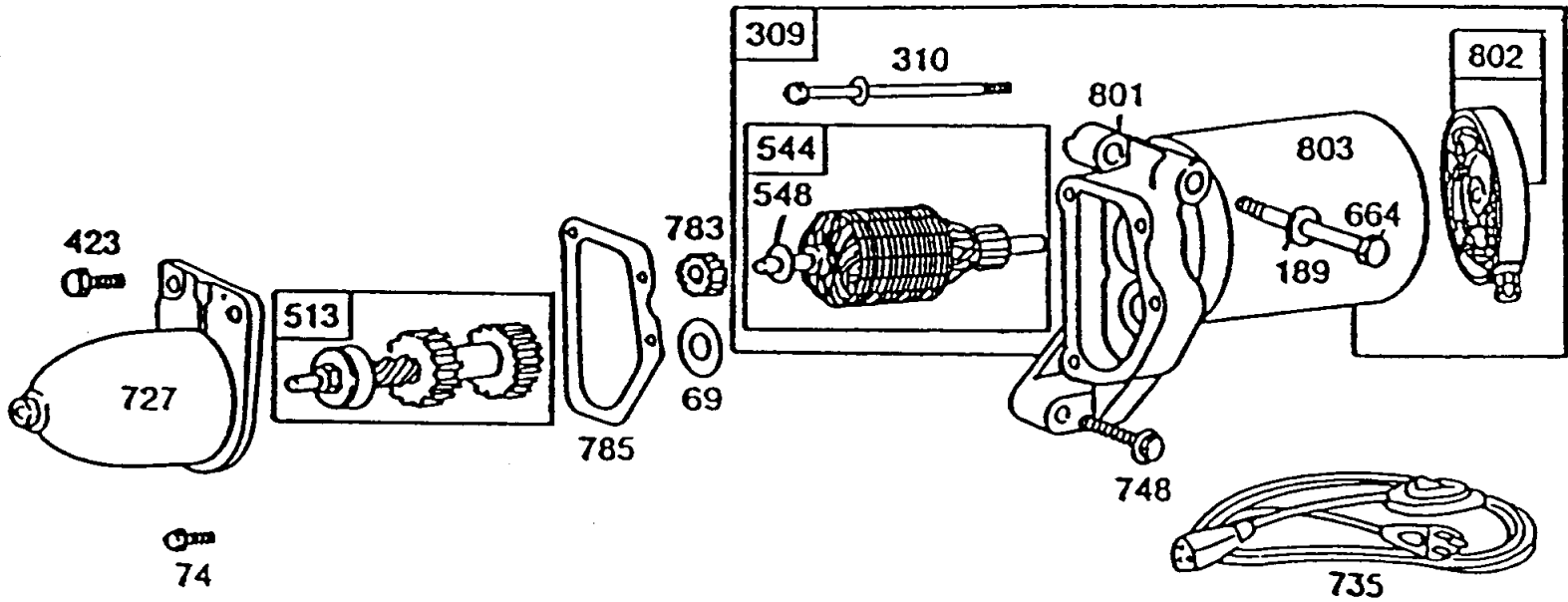
## Cylinder, Gear Case, Piston Grp

| REF NO | PART NO | QTY | DESCRIPTION   |
|--------|---------|-----|---|
| 525B   | 280578  |     | TUBE, Dipstick<br>-Used After Code Date 90102800          |
| 525    | 91258   |     | TUBE, Dipstick<br>-(2 1/2)                                |
| 552    | 231079  |     | BUSHING, Governor Crank<br>-(1/4 I.D.)                    |
| 562    | 92613   |     | BOLT<br>-(Governor Lever)                                 |
| 592    | 231082  |     | NUT<br>-(Governor Control)                                |
| 614    | 93306   |     | PIN, Cotter   |
| 615    | 93307   |     | RETAINER, Governor Shaft                                  |
| 616    | 231077  |     | CRANK, Governor<br>-(1/4 Diameter)                        |
| 635    | 66538   |     | BOOT, Spark Plug  |
| 665    | 298858  |     | MINDER, Oil   |
| 741    | 261696  |     | GEAR, TIMING<br>-(Plain Bearing)                          |
| 741    | 262060  |     | GEAR-TIMING<br>-(Ball Bearing)                            |
| 842    | 270920  |     | SEAL, O-Ring<br>-(Dipstick Tube) (Oil Fill)               |
| 847A   | 493367  |     | DIPSTICK/TUBE ASSEMBLY<br>-Used Before Code Date 90102900 |
| 847A   | 494417  |     | DIPSTICK/TUBE ASSEMBLY<br>-Used After Code Date 90102800  |
| 847    | 493955  |     | DIPSTICK/TUBE ASSEMBLY                                    |
| 869    | 211787  |     | SEAT, Valve<br>-(Intake)                                  |
| 870    | 211172  |     | SEAT, Valve<br>-(Intake)                                  |
| 871    | 262001  |     | BUSHING-VALVE GUIDE<br>-(Exhaust)                         |
| 871    | 63709   |     | BUSHING, Valve Guide<br>-(Intake)                         |
| 1019   | 491100  |     | KIT, Label  |

---

**Footnotes:**

To Replace Crankshaft Gear Pin, Order Part No. 230978



| Reference Numbers |            |            |        |            |            |            |        |        |           |
|-------------------|------------|------------|--------|------------|------------|------------|--------|--------|-----------|
| 69                | 310        | 423        | 548    | 664        | 727        | 748        | 783    | 785    | 801       |
| Washer            | Motor Bolt | Sem. Screw | Washer | Mtg. Screw | Drive Hsg. | Mtg. Screw | Pinion | Gasket | Mtg. Head |
| 93676             | 93648      | 93654      | 93649  | 93358      | 390543     | 93534      | 230972 | 270718 | 390544    |

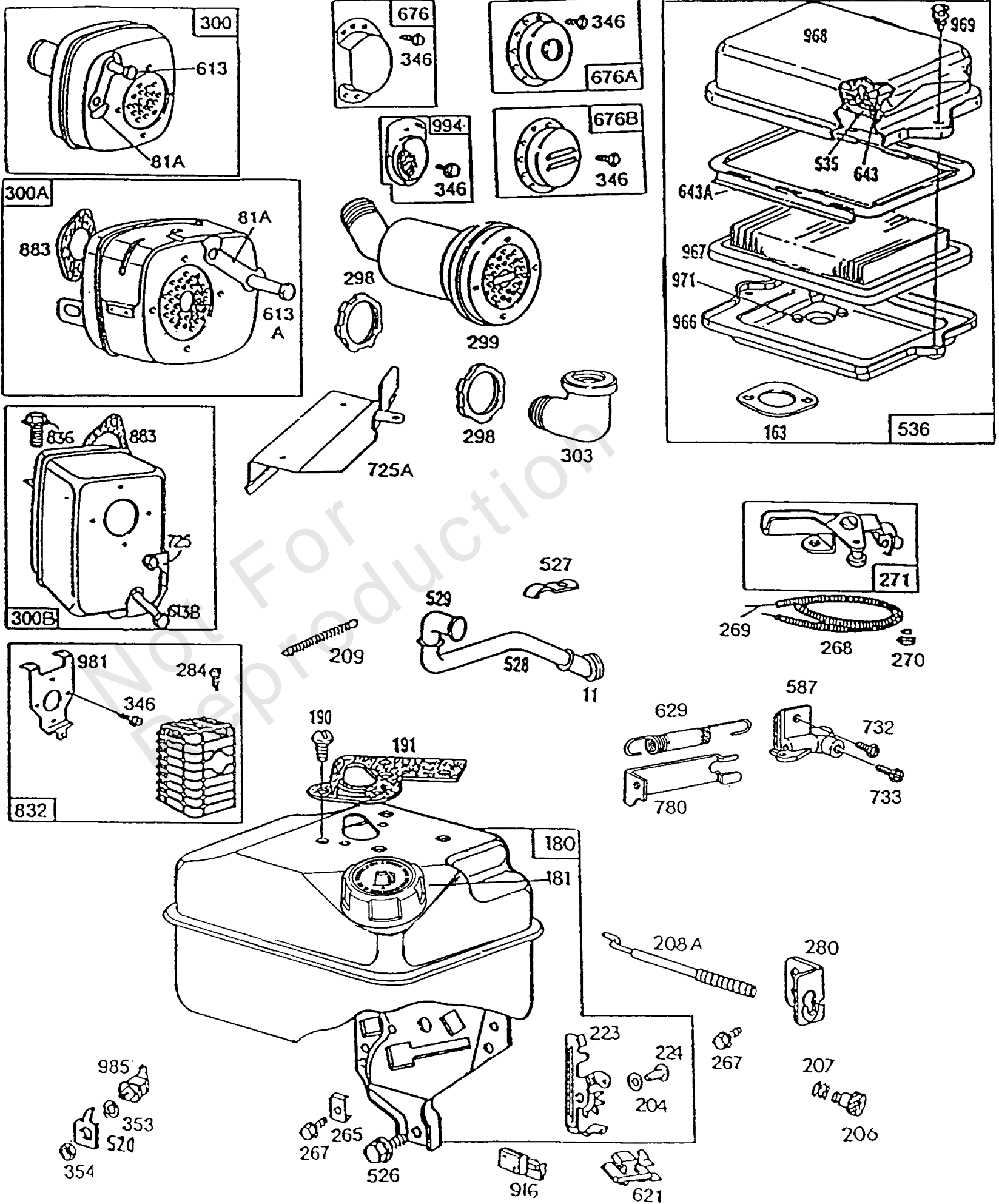
| Reference Number          | 309          | 513                   | 544                      | 802                                    | 803                     |
|---------------------------|--------------|-----------------------|--------------------------|--|-------------------------|
|                           | <b>Motor</b> | <b>Drive Assembly</b> | <b>Armature Assembly</b> | <b>End Cap Assembly<br/>Commutator</b> | <b>Housing Assembly</b> |
| <b>Starter Motor Mfr.</b> |              |                       |                          |  |                         |
| <b>American</b>           |              |                       |                          |  |                         |
| <b>Bosch</b>              |              |                       |                          |  |                         |
| 12V                       | 390551*      | 391029                | 390467                   | 390465                                 | 390468                  |
| 120V                      | 393842**     | 391029                | -                        | -                                      | -                       |

\*Uses #92813 Lockwasher and # 231082 Hex Nut

\*\*Includes Entire Motor and Drive Assembly

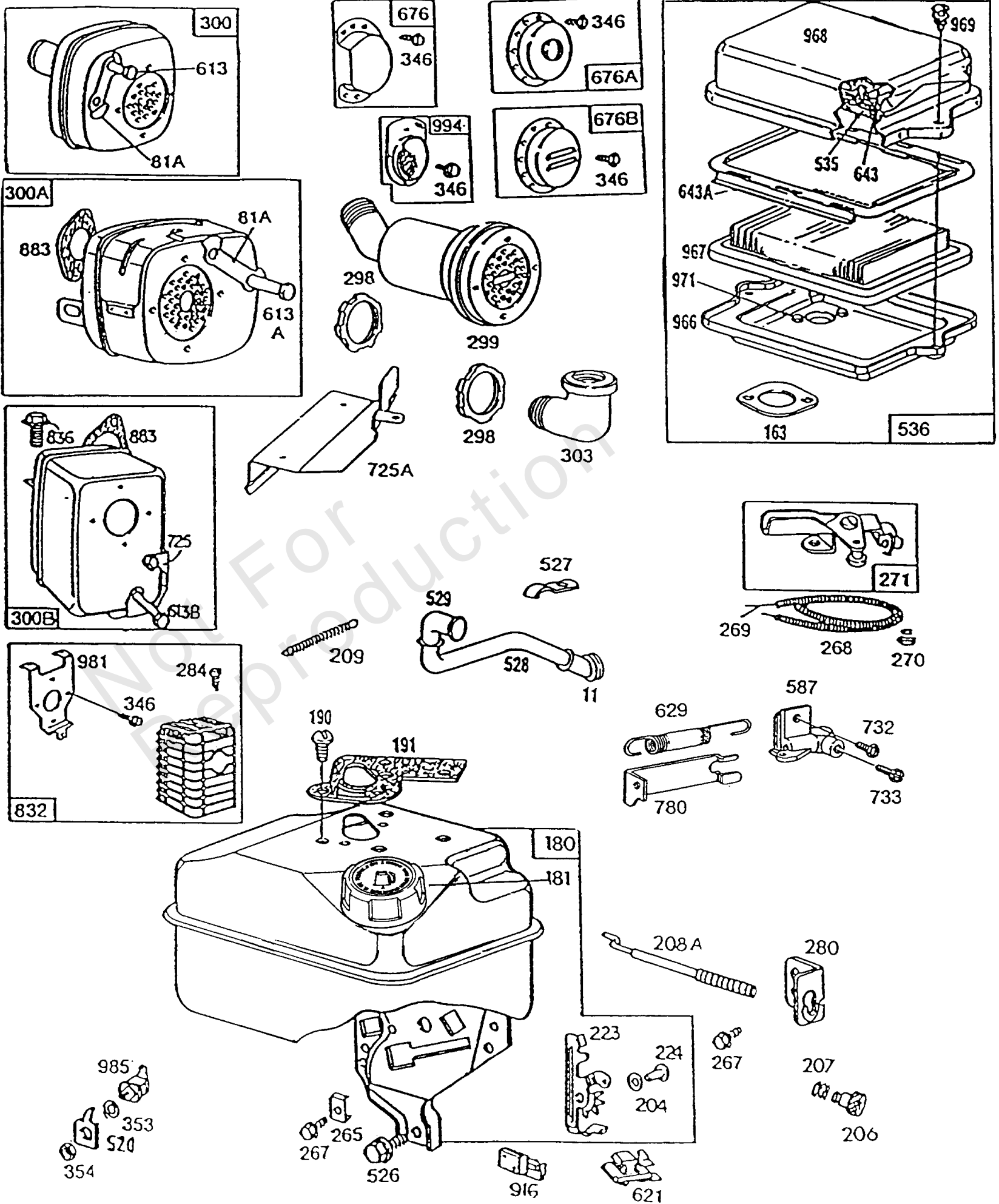
## Electric Starter

| REF NO | PART NO | QTY | DESCRIPTION  |
|--------|---------|-----|--|
| 69     | 93676   |     | WASHER<br>-(Spring)  |
| 74     | 93490   |     | SCREW<br>-(Rotating Screen)  |
| 74     | 93808   |     | SCREW  |
| 189    | 90366   |     | WASHER   |
| 309    | 390551  |     | MOTOR, Starter<br>-(American Bosch 12V) Uses #92813 Lockwasher and #231082 Hex Nut |
| 309    | 393842  |     | MOTOR, Starter<br>-(American Bosch 110V) Includes Entire Motor and Drive Assembly  |
| 310    | 93648   |     | SCREW  |
| 423    | 93654   |     | SCREW  |
| 513    | 391029  |     | DRIVE, Starter<br>-(American Bosch 110V)   |
| 544    | 390467  |     | ARMATURE, Starter<br>-(American Bosch 12V)   |
| 548    | 93649   |     | WASHER   |
| 664    | 93358   |     | SCREW  |
| 727    | 390543  |     | COVER, Starter Drive<br>-(Metal Flywheel Ring Gear)                                |
| 735    | 390900  |     | CORD, Starter<br>-(Includes Switch)  |
| 748    | 93534   |     | SCREW  |
| 783    | 230972  |     | GEAR, Pinion<br>-Parts Common to the 12V and 110V Motors                           |
| 785    | 270718  |     | GASKET, Starter Cover  |
| 801    | 390544  |     | CAP, Drive   |
| 802    | 390465  |     | CAP, End<br>-(American Bosch 12V)  |
| 803    | 390468  |     | HOUSING, Starter<br>-(American Bosch 12V)  |



## Mufflers, Deflectors, Fuel, A/C

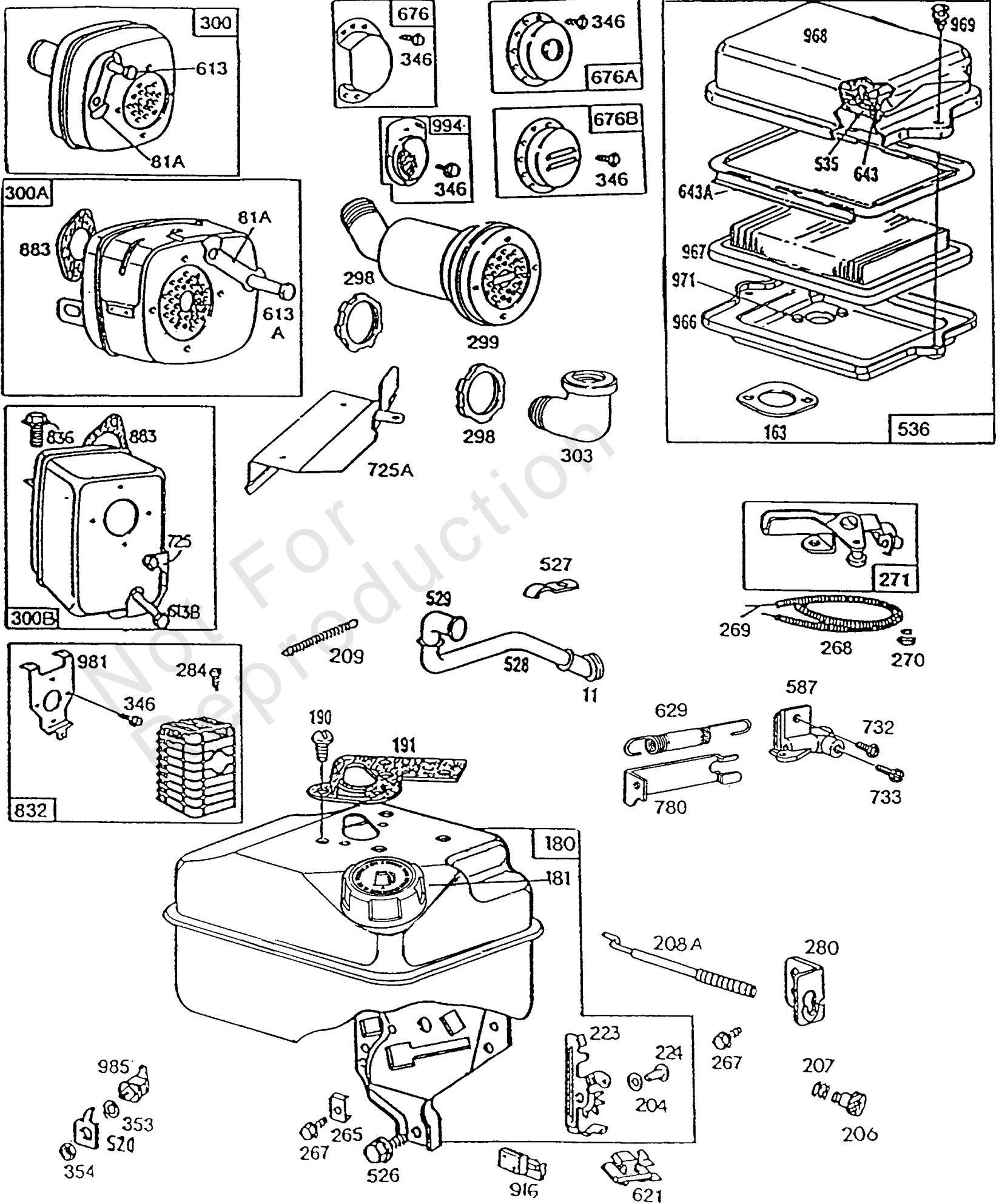
| REF NO | PART NO | QTY | DESCRIPTION  |
|--------|---------|-----|--|
| 11     | 66578   |     | TUBE, Breather   |
| 81A    | 222263  |     | LOCK, Muffler Screw<br>-(3/8 Diameter Bolt Holes)  |
| 163    | 271935  |     | GASKET, Air Cleaner  |
| 180    | 491424  |     | TANK, Fuel<br>-(1 Quart) Uses: 491266 Bracket-Control  |
| 180    | 491424  |     | TANK, Fuel<br>-(1 Quart) Uses: 495114 Bracket-Control  |
| 180    | 492927  |     | TANK, Fuel   |
| 181    | 490075  |     | CAP, Fuel Tank   |
| 190    | 94094   |     | SCREW  |
| 191    | 271928  |     | GASKET, Fuel Tank<br>-Included in Gasket Set-Part No. 397145. Included in Carburetor Overhaul Kit-<br>Part No. 494624  |
| 204    | 222962  |     | BUSHING, Lever   |
| 206    | 231266  |     | NUT, Governor Adjusting<br>-(6-32)   |
| 207    | 26855   |     | SPRING, Governor Link  |
| 208A   | 262323  |     | ROD, Governor Control  |
| 209    | 262282  |     | SPRING, Governor   |
| 223    | 223455  |     | LEVER, Governor Control  |
| 224    | 93491   |     | RIVET  |
| 265    | 221535  |     | CLAMP, Casing<br>-(Stamped Steel)  |
| 267    | 93496   |     | SCREW<br>-(10-32 X 5/8)  |
| 268    | 66986   |     | CASING, Control Wire<br>-(Cut To Required Length)  |
| 269    | 26099   |     | WIRE, Control<br>-(Cut To Required Length) If Longer Wire is Needed, Specify Length in Inches; if<br>Shorter Wire is Needed, Order No. 26099 and Cut to Required Length. |
| 270    | 63426   |     | NUT<br>-(Control Wire Casing)  |
| 271    | 290568  |     | LEVER, Control   |
| 280    | 223798  |     | BRACKET, Control   |
| 284    | 93572   |     | SCREW<br>-(10-32 X 3/8)  |
| 298    | 261409  |     | LOCKNUT<br>-(Muffler and Elbow)  |
| 299    | 393368  |     | MUFFLER<br>-(20 Degree )   |
| 300A   | 390918  |     | MUFFLER<br>-(Lo Tone)  |
| 300A   | 391313  |     | MUFFLER<br>-Uses: 223717 Spacer-Muffler Bracket 391232 Guard-Muffler   |
| 300A   | 391313  |     | MUFFLER<br>-Uses: 222361 Brace-Muffler 94153 Screw-Hex. Hd.  |
| 300A   | 222379  |     | RETAINER, Muffler Guard<br>-Used Before Code Date 88090300   |
| 300A   | 93415   |     | SCREW<br>-(1/4-20 X 3/4)<br>-Used Before Code Date 88090300  |
| 300B   | 396001  |     | MUFFLER<br>-(Lo Tone)  |
| 300A   | 94186   |     | SCREW<br>-(Tapping)  |
| 300A   | 391313  |     | MUFFLER<br>-Uses: 222361 Brace-Muffler   |





## Mufflers, Deflectors, Fuel, A/C

| REF NO | PART NO | QTY | DESCRIPTION   |
|--------|---------|-----|---|
| 300A   | 94153   |     | SCREW<br>-Used After Code Date 88090200                         |
| 300    | 393615  |     | MUFFLER<br>-(Lo Tone) Parts Furnished by Equipment Manufacturer |
| 303    | 91464   |     | ELBOW, Exhaust<br>-(90 Degree Street)                           |
| 303    | 94089   |     | ELBOW, Exhaust<br>-(45 Degree Street)                           |
| 346    | 93705   |     | SCREW<br>-(8-32 X 3/8)  |
| 353    | 92791   |     | WASHER  |
| 354    | 90576   |     | NUT<br>-(Ground Terminal)                                       |
| 520    | 93722   |     | TERMINAL, Ground  |
| 526    | 94409   |     | SCREW<br>-(Fuel Tank)   |
| 527    | 223786  |     | CLAMP, Tube   |
| 528    | 231550  |     | TUBE, Breather  |
| 529    | 67838   |     | GROMMET   |
| 535    | 491435  |     | FILTER, Pre Cleaner<br>-(Pre-Cleaner)                           |
| 536    | 494279  |     | CLEANER-AIR   |
| 587    | 213474  |     | CLAMP, Speed Control  |
| 613B   | 94054   |     | SCREW<br>-(Muffler)   |
| 613A   | 94042   |     | SCREW<br>-(Muffler)   |
| 613    | 93935   |     | SCREW<br>-(Muffler)   |
| 621    | 396847  |     | SWITCH, Stop  |
| 629    | 261137  |     | SPRING, Throttle Return<br>-(Throttle Return)                   |
| 643A   | 280726  |     | RETAINER, Air Filter  |
| 643    | 280737  |     | SUPPORT, Foam Element   |
| 676A   | 395700  |     | DEFLECTOR, Muffler<br>-(Direct Outlet)                          |
| 676    | 393757  |     | DEFLECTOR, Muffler<br>-(Side Outlet)                            |
| 725A   | 223867  |     | SHIELD, Heat  |
| 725    | 223303  |     | SHIELD, Heat  |
| 732    | 94414   |     | SCREW   |
| 733    | 94415   |     | SCREW   |
| 780    | 224085  |     | ANCHOR, Spring  |
| 832    | 490534  |     | GUARD, Muffler  |
| 836    | 93559   |     | SCREW<br>-(Tank) (Fuel Tank)                                    |
| 883    | 270918  |     | GASKET, Exhaust<br>-Included in Gasket Set-Part No. 397145      |
| 916    | 280321  |     | RACK, Governor Gear<br>-(Remote and Manual Choke)               |
| 966    | 490074  |     | BASE, Air Cleaner   |
| 967    | 491588  |     | FILTER, A/C Cartridge   |
| 968    | 223765  |     | COVER, Air Cleaner  |
| 969    | 490073  |     | SCREW<br>-(Air Cleaner)   |
| 971    | 94018   |     | SCREW   |



## ***Mufflers, Deflectors, Fuel, A/C***

---

| REF NO | PART NO | QTY | DESCRIPTION            |
|--------|---------|-----|------------------------|
| 981    | 223373  |     | BRACKET, Muffler Guard |
| 985    | 398525  |     | INSULATOR              |
| 994    | 399541  |     | ARRESTOR, Spark        |

---

Not For Reproduction

## Replacement Engine - US & Canada

| REF NO | PART NO    | QTY | DESCRIPTION   |
|--------|------------|-----|---|
|        | 1263321036 | 1   | Replacement Engine  |
|        | -----      |     | Top No-Load Speed: 4000<br>-Trim: 01  |
|        | -----      |     | Service Note: Replacement engine listed is not available in the State of California. Repair with individual parts.  |
|        | -----      |     | Service Note: If the replacement engine supersedes to or is a Model 120000 series engine, refer to the illustrations located after the conversion data for this model series. the overall dimensions that differ, are shown in the illustrations. |
|        | -----      |     | Service Note: If after making a visual inspection and it is determined the Model 120000 series engine cannot be used because of equipment interference, the original engine should be repaired with individual parts.                             |
|        | -----      |     | Service Note: For all Go-Karts use only a Model 136200 series engine as a replacement, regardless of the original Model.  |

Not For Reproduction

